



HOW-TO

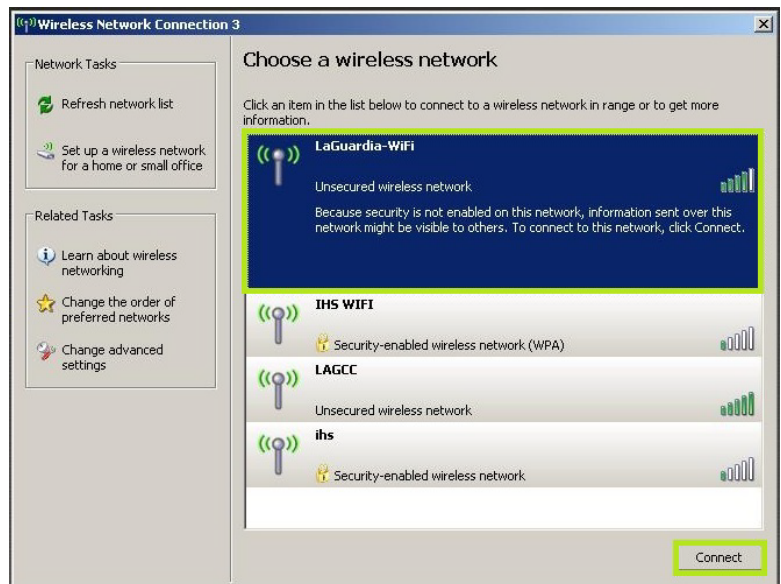
How to connect to the LaGuardia wireless network:

Windows XP

1. Click on the **Wireless Network Connection** icon in taskbar.



2. In order to connect to wireless network select **LaGuardia-WiFi**, then click on **Connect**.



3. When prompted, click on **Connect Anyway** in order to finish connecting to the wireless network.



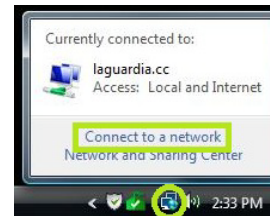
Next Step

After a successful connection is established, please launch a web browser of your choice i.e. Internet Explorer, Firefox, Chrome. You then will be redirected to a web portal page. Please follow the instructions on the page in order to log onto the wireless network. **Please turn off your popup blocker before logging in.**

How to connect to the LaGuardia wireless network:

Windows Vista

1. Left click on the network connection icon in taskbar. Then click on **Connect to a network**.



2. Select the Unnamed Network which has **LaGuardia-WiFi** next to it and click **Connect**.



3. When prompted, click on **Connect Anyway**.



4. This window should appear while the connection is established.



5. When you see this message shown on the screen, click on **Close**.



6. Left click on network connection icon in taskbar. You should see **LaGuardia-WiFi** as one of the connections.



Next Step

After a successful connection is established, please launch a web browser of your choice i.e. Internet Explorer, Firefox, Chrome. You then will be redirected to a web portal page. Please follow the instructions on the page in order to log onto the wireless network. **Please turn off your popup blocker before logging in.**

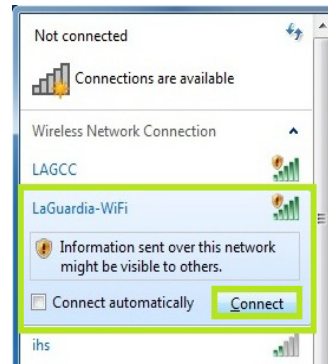
How to connect to the LaGuardia wireless network:

Windows 7

1. Click on the **wireless icon** in your taskbar.



2. Select **LaGuardia-WiFi** with the black exclamation point on a yellow background. Then click the **Connect** button to connect to this network.



3. After the connection is established, you should see **Connected** next to **LaGuardia-WiFi**.



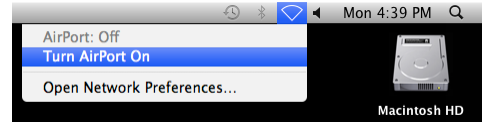
Next Step

After a successful connection is established, please launch a web browser of your choice i.e. Internet Explorer, Firefox, Chrome. You then will be redirected to a web portal page. Please follow the instructions on the page in order to log onto the wireless network. **Please turn off your pop up blocker before logging in.**

How to connect to the LaGuardia wireless network:

Mac OSX

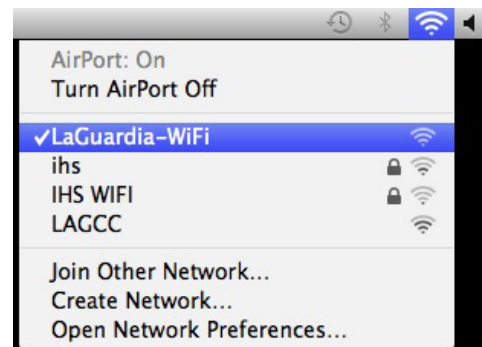
1. Click on the wireless icon on menu bar next to the clock and make sure that “Turn **AirPort On**” is set to on.



2. Click on **LaGuardia-WiFi** in order to connect to this wireless network.



3. After the connection is established, you will notice that the wireless icon on the menu bar on top has changed. When clicked on, you should see **LaGuardia-WiFi** in the list of wireless networks. It should have a check mark next to it.



Next Step

After a successful connection is established, please launch a web browser of your choice i.e. Internet Explorer, Firefox, Chrome. You then will be redirected to a web portal page. Please follow the instructions on the page in order to log onto the wireless network. **Please turn off your popup blocker before logging in.**

How to connect to the LaGuardia wireless network:

Linux

1. Click on wireless icon in task bar and select **LaGuardia-WiFi**.



2. After a wireless connection is established, you should see **LaGuardia-WiFi** under your wireless networks.



Next Step

After a successful connection is established, please launch a web browser of your choice i.e. Internet Explorer, Firefox, Chrome. You then will be redirected to a web portal page. Please follow the instructions on the page in order to log onto the wireless network. **Please turn off your popup blocker before logging in.**